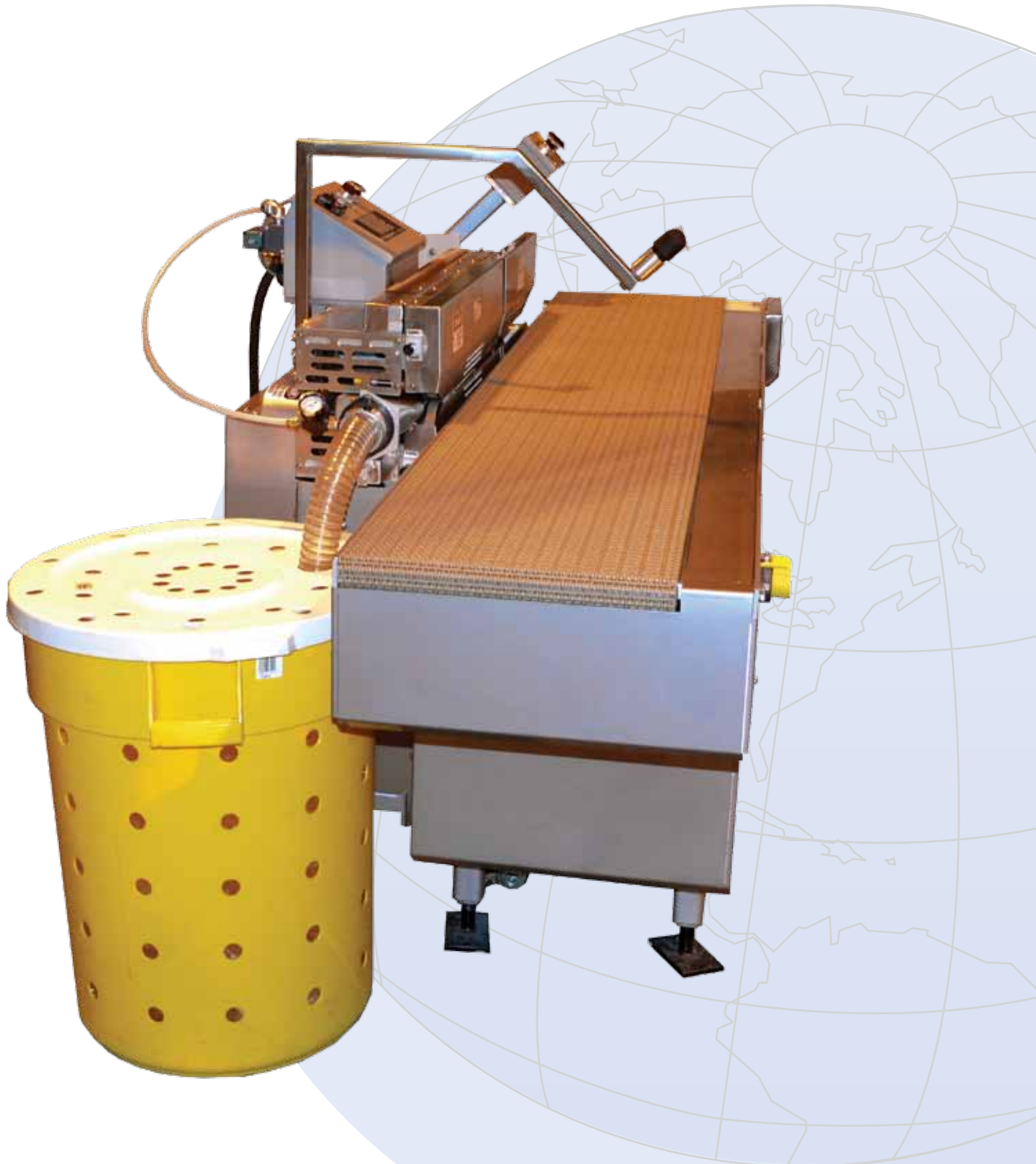


92PS Heat Sealer



Mid-West Sales & Manufacturing
 15815 W. 110th Street
 Lenexa, KS 66219
 Tel: (913)541-8700 • Fax: (913) 541-0781
 officeks@ubeusa.com



West Coast Sales & Manufacturing
 19216 S. Laurel Park Road
 Rancho Dominguez, CA 90220
 Tel: (310) 635-8121 • Fax: (310) 635-8171
 sales@ubeusa.com

www.ubeusa.com

UBE builds the 92PS Heat Sealer for each customer's particular needs.
 Your machine may vary from this typical unit illustrated.
 UBE wants to meet with you and design your new line.

Specifications:

Specifications vary by product and application. Please contact our sales office about product varieties and speeds.

Electrical Requirement:

Voltage: 120 VAC, 40 Amp, single phase (60 Hz)

Variable Speed: Up to 120 feet per minute

Air Requirements:

Dry, filtered One drop (12 CFM maximum @ 100 psi)

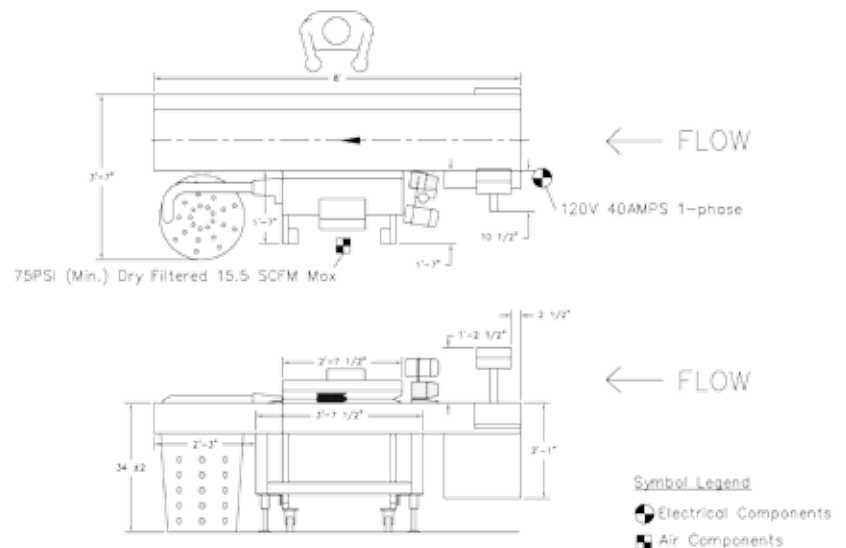
Features:

- Simple design
- Seals close to products
- Few spare parts
- Robust belt and pulley design to handle jams
- Minimal moving parts to reduce wear
- Comes with two trash bins for trim removal
- Roll-away head unit
- The sealing head unit and the conveyor are two separate units, allowing you to replace the head unit with minimal downtime.
- Runs up to 120 feet per minute
- Field tested at 65 bags / min for thin-buns
- Easy to use operator controls
- Can easily be integrated into your existing line

Options:

- Stainless steel frame
- Trim removal vacuum system
- Short or Tall units
- Sealer height:
 - Tall: 28 1/2" to 35 1/2"
 - Short: 33 1/2" to 40 1/2"
- Conveyor height:
 - Tall: 32 1/8" to 36 1/2"
 - Short: 28 1/8" to 32 1/2"

Technical Layout:



UBE MODEL 92PS
 LEFT HAND PRODUCT SEALER
 DATE: 11-2-2011
 SCALE: 1/2" = 1'